



2nd Annual
Girl Scout Golf Classic



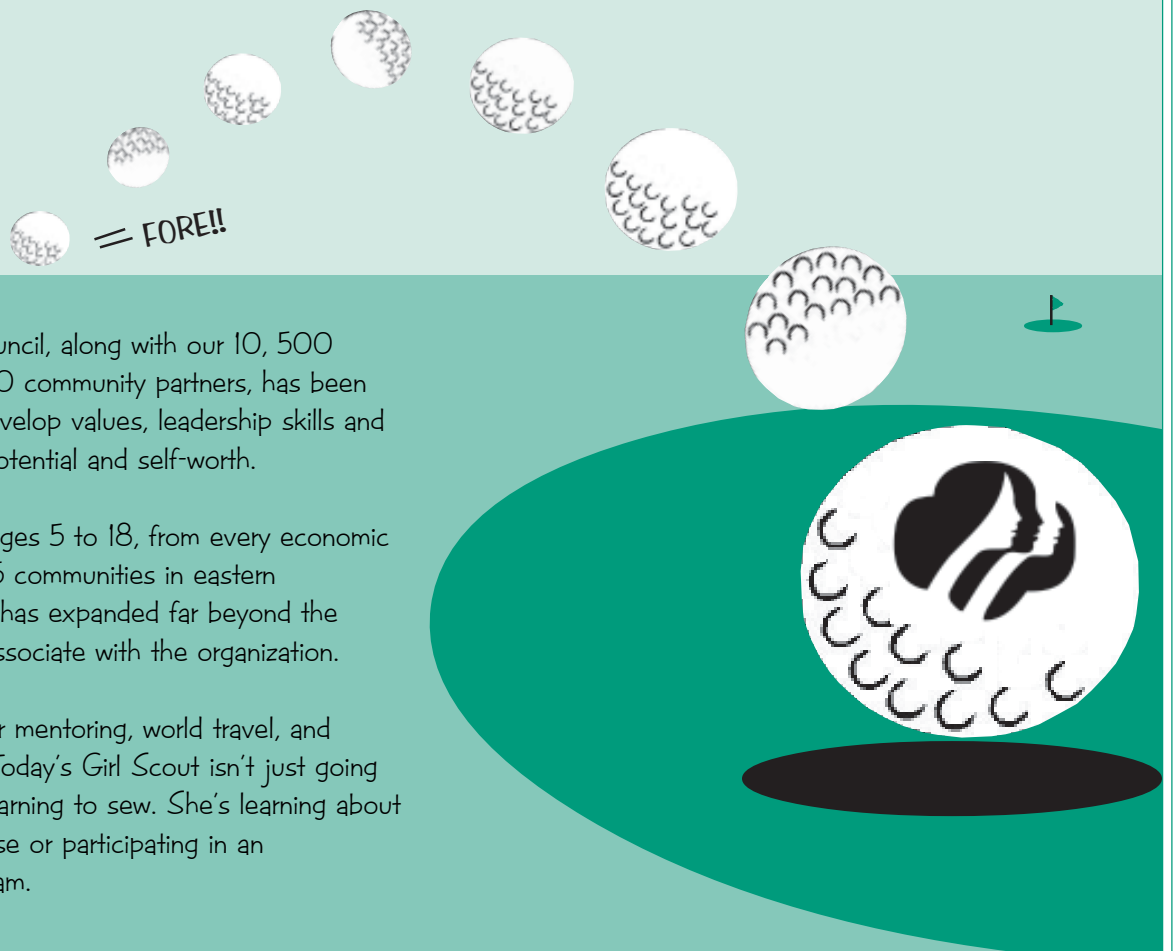
William Devine Golf Course
at Franklin Park
One Circuit Drive, Dorchester MA
FRIDAY, JULY 28, 2006

7:00 a.m. Registration & Dunkin' Donuts Breakfast
8:00 a.m. Shotgun Start
1:00 p.m. Awards Lunch

Sponsored by:

Deloitte.

ABC Bakers



Girl Scouts, Patriots' Trail Council, along with our 10, 500 volunteers and more than 100 community partners, has been committed to helping girls develop values, leadership skills and conviction about their own potential and self-worth.

Serving over 23,000 girls, ages 5 to 18, from every economic class and cultural group in 65 communities in eastern Massachusetts, Patriots' Trail has expanded far beyond the activities that many people associate with the organization.

We offer sports clinics, career mentoring, world travel, and environmental stewardships. Today's Girl Scout isn't just going camping, creating crafts or learning to sew. She's learning about engineering, yoga, self-defense or participating in an entrepreneurial training program.

Girl Scout Golf Classic

Sponsorship Opportunities

.....

Underwriter - \$3,000

- Table in clubhouse for company marketing materials and/or representative
- Speaking opportunity at lunch
- Company Name included in all marketing materials*
- Logo on Patriots' Trail website and all hole signs
- Company banner to be prominently displayed at event
- Two Foursomes
- Other benefits negotiable

Corporate Sponsor - \$1,500

- Company Name included in all marketing materials*
- Company banner to be prominently displayed at event
- One Hole Sponsorship
- One Foursome

Hole Sponsor - \$1,000

- One Hole Sponsorship
- One Foursome

Foursome - \$600

- Four Greens Fees with two carts

Golfer - \$150

- Greens Fee with a Cart

.....

*subject to print deadlines

Girl Scout Golf Classic Registration Form

- \$3,000 Underwriter
- \$1,500 Corporate Sponsor
- \$1,000 Hole Sponsor
- \$600 Foursome
- \$150 Golfer
- No, I can't play, but I'd like to donate!

Team Captain

Company/Individual Contact Person

Mailing Address

Telephone Email

Player 2 Email

Player 3 Email

Player 4 Email

Total Amount Enclosed \$ _____

Please mail completed form along with checks payable to
Girl Scouts, Patriots' Trail Council,
or pay by credit card below.

(circle one)

Mastercard

Visa

Name on Card

Acct. # Expiration Date

Signature

For more information, contact Judy Sunblade, Director of Development and External Relations
at 617-482-1078 ext. 204 or jsunblade@ptgirlscouts.org